



ETHERNET EXTENSION EXPERTS

Enable-IT 260LP Lightning Protector Kit Quickstart Guide



Key Benefits

The following list identifies the 260LP Lightning Protection Kit key benefits.

- Protects against costly LAN equipment replacement in case of electrical damage.
- Rapid installation with small box profile, no programming and no firmware to upgrade.
- Low profile inline unit dual Ethernet LAN port and grounding terminal.

Summary of Features

The Enable-IT 260LP Lightning Protection Kit has the following hardware features:

- Transparent to Ethernet line over existing CAT 2 (Telco) up to CAT6 wiring
- Uses RJ-45 Telco style jacks for Ethernet line protection
- Rapid Telco style installation – no programming required
- Network Equipment independence – Transparent to protocols/applications/MAC

Electrical Specifications

Ethernet Connectors	(2) RJ45 Jack
Data Lines	Pair 1: Pins 1 and 2 Pair 2: Pins 3 and 6
Data Clamping Voltage	15 Volts

Mechanical Specifications

Enclosure Material	Weather Resistant Ruggedized Steel case
Enclosure Color	Black
Ground Lug	12 AWG Max.
Operating Temperature	-40 C (-40 F) to +80 C (+176 F)
Weight	.27 lbs. (.12 kg)
Dimensions (W x H x L)	3 x 1 x 1 (inches) 76 x 25 x 25 (mm)
RoHS Compliant	Yes

INSTALLING THE 260LP LIGHTNING PROTECTION KIT

OUTDOOR INSTALLATION WARNING

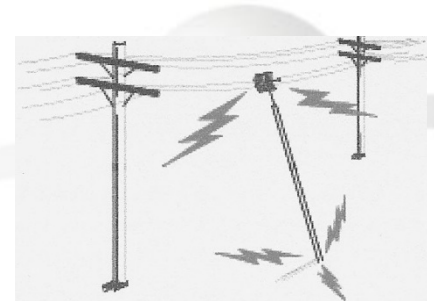
IMPORTANT SAFETY PRECAUTIONS:

Site Plan - Installation Design Considerations

The planning process should involve a site walkthrough and discovery survey. Lightning and high voltage power line risks should be identified and avoided wherever possible for the installation for the 260LP and your wiring. Estimate the best locations to position the Enable-IT 260LP units to adequately protect any exposed or at risk wiring. Document your findings to use in designing a network topology and documentation to aid in the support your Ethernet connectivity.

LIVES MAYBE AT RISK! Carefully observe these instructions and any special instructions that are included with the equipment you are installing.

CONTACTING POWER LINES CAN BE LETHAL. Make sure no power lines are anywhere where possible contact can be made. Antennas, masts, towers, guy wires or cables may lean or fall and contact these lines. People may be injured or killed if they are touching or holding any part of equipment when it contacts electric lines.



Make sure there is NO possibility that equipment or personnel can come in contact directly or indirectly with power lines. Assume all overhead lines are power lines. The horizontal distance from a tower, mast or antenna to the nearest power line should be at least twice the total length of the mast/antenna combination. This will ensure that the mast will not contact power if it falls either during installation or later.

TO AVOID FALLING, USE SAFE PROCEDURES WHEN WORKING AT HEIGHTS ABOVE GROUND.

- Select equipment locations that will allow safe, simple equipment installation.
- Don't work alone. A friend or co-worker can save your life if an accident happens.
- Use approved non-conducting ladders and other safety equipment. Make sure all equipment is in good repair.
- If a tower or mast begins falling, don't attempt to catch it. Stand back and let it fall.
- If anything such as a wire or mast does come in contact with a power line, **DON'T TOUCH IT OR ATTEMPT TO MOVE IT.** Instead, save your life by calling the power company.
- Don't attempt to erect antennas or towers on windy days.

MAKE SURE ALL TOWERS AND MASTS ARE SECURELY GROUNDED, AND ELECTRICAL CABLES CONNECTED TO ANTENNAS HAVE LIGHTNING ARRESTORS.

This will help prevent fire damage or human injury in case of lightning, static build-up, or short circuit within equipment connected to the antenna.

INSTALLING THE 260LP LIGHTNING PROTECTION KIT

Unpacking the Enable-IT 260LP Lightning Protection Kit

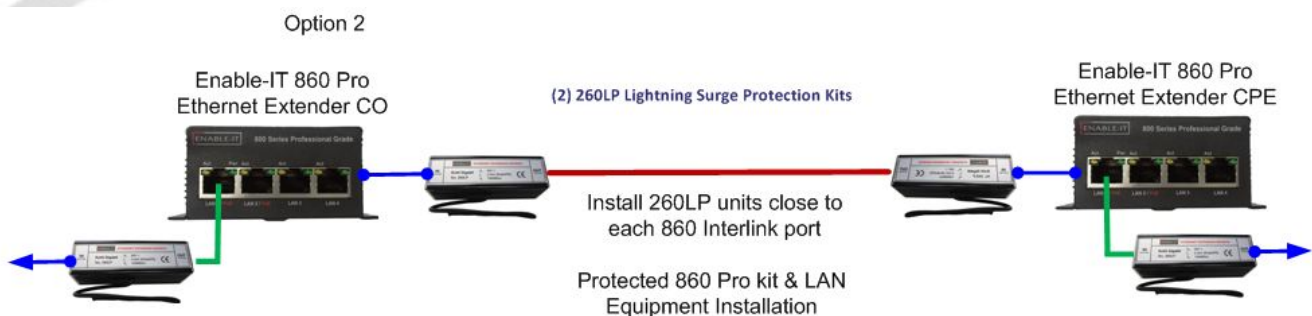
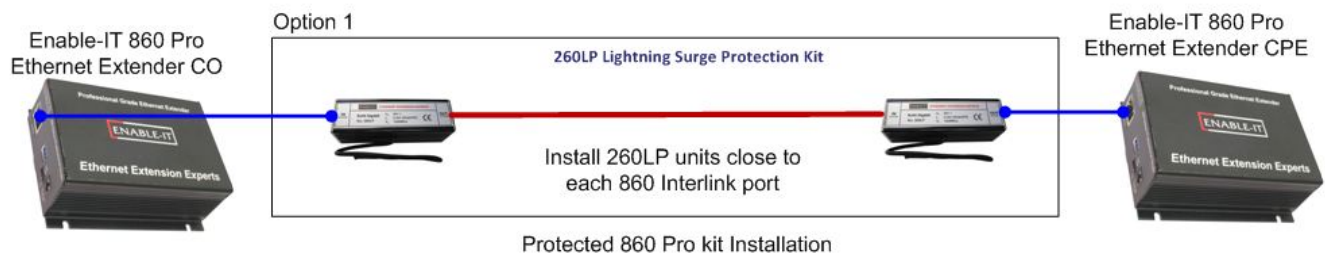
Carefully remove the Enable-IT 260LP Lightning Protection Kit from all packing materials in the box. Verify that the items listed below are present. Make sure that the equipment supplied matches what you ordered. If any items are missing or damaged, please contact your Enable-IT or your distributor for assistance.

- (2) The Enable-IT 260LP Lightning Protection Units
- Enable-IT 260LP Lightning Protection Kit User Manual (this manual)

There are two options for installing the 260LP kit.

Option 1 – Ethernet Extender Kit protection

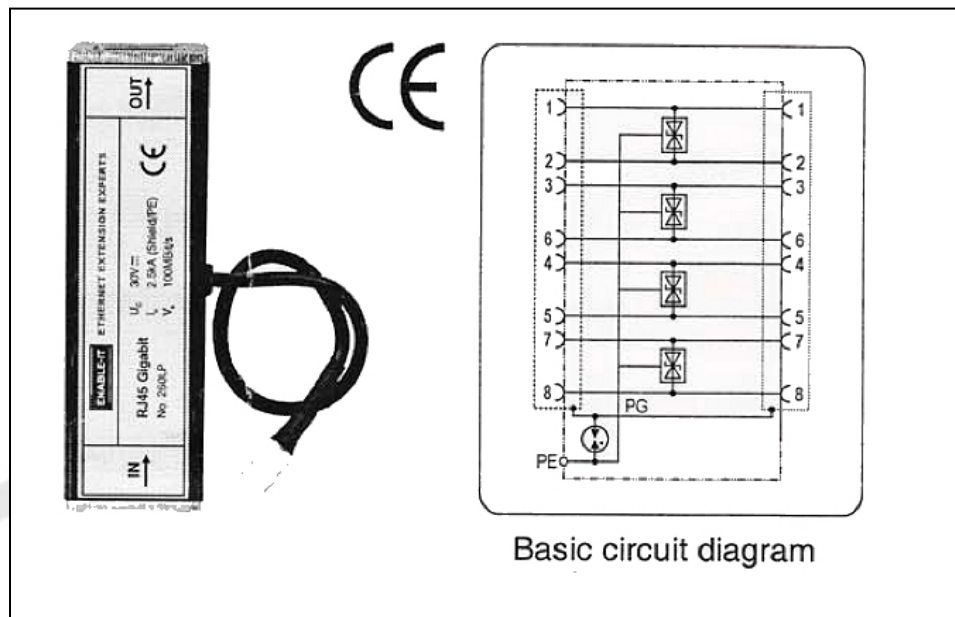
Option 2 – Optimized LAN & Ethernet Extender Kit protection



Performing the On-Site Installation

- ❶ Punch required holes in Cable Grommet and insert wires into protector. (Cable Grommet is removable)
- ❷ Insert the terminated CAT6 cable into the RJ45 jacks Note, unit provides protection to both jacks equally.
- ❸ Attach ground wire to the Ground Lug (10 AWG max.) and attach to terminal inside the protector.

Grounding Note: To ensure proper operation of the protector, install an earth ground to the ground lug in the protector. Please refer to the National Electric Code (or your local codes) for additional information or contact a licensed electrician for assistance. If mounting this unit to a wall or other surface, break-away holes are provided on the rear of the unit.



CAT5 / CAT6 Pinouts:

- RJ-45 Pin 1 - Data pair 1
- RJ-45 Pin 2 - Data pair 1
- RJ-45 Pin 3 - Data pair 2
- RJ-45 Pin 6 - Data pair 2

TECHNICAL SUPPORT

Enable-IT, Inc.'s Customer Care Team support is available directly to customers and distributors. All support requests are processed through the online support portal. This allows us to provide assigned support ticket numbers in order to bring closure to any technical issues.

Online Technical Services

The Enable-IT Support Portal is available 24/7 to open a ticket or check the status of one. Please use this support website as your first source for help as it contains an on-line knowledge base of articles, documentation, FAQ's and other problem-solving resources. This web-based support resource provides the quickest solution to the most common technical support issues.

CONTACT US

Sales and Customer Care:

Toll Free US and Canada

888 309-0910
866 389-8605 Fax

Other International

+1 702 924-0402
+1 702 800-2711 Fax

E Mail

sales@enableit.com
support@enableit.com

RMA Support: